

BRYSTON

MODEL wTS-12 SUBWOOFER
Quick Setup Guide



BRYSTON

Bryston Head Office 677 Neal Drive
Siège Social Bryston Peterborough, ON
Canada, K9J 6X7

Phone 1-705-742-5325
Toll Free • Sans frais 1-800-632-8217
Email • Courriel: contact@bryston.com

www.bryston.com

IMPORTANT SAFETY INSTRUCTIONS

CAUTION

1. Read these instructions.
2. Keep these instructions.
3. Heed all warnings.
4. Follow all instructions.
5. Do not use this apparatus near water.
6. Clean only with dry cloth.
7. Do not block any ventilation openings. Install in accordance with the manufacturer's instructions.
8. Do not install near any heat sources such as radiators, heat registers, stoves, or other apparatus (including amplifiers) that produce heat.
9. Do not defeat the safety purpose of the polarized or grounding-type plug. A polarized plug has two blades with one wider than the other. A grounding type plug has two blades and a third grounding prong. The wide blade or the third prong are provided for your safety. If the provided plug does not fit into your outlet, consult an electrician for replacement of the obsolete outlet.
10. Protect the power cord from being walked on or pinched particularly at plugs, convenience receptacles, and the point where they exit from the apparatus.
11. Only use attachments/accessories specified by the manufacturer.



Use only with the cart, stand, tripod, bracket, or table specified by the manufacturer, or sold with the apparatus. When a cart is used, use caution when moving the cart/apparatus combination to avoid injury from tip-over.

13. Unplug this apparatus during lightning storms or when unused for long periods of time.
14. Refer all servicing to qualified service personnel. Servicing is required when the apparatus has been damaged in any way, such as power-supply cord or plug is damaged, liquid has been spilled or objects have fallen into the apparatus, the apparatus has been exposed to rain or moisture, does not operate normally, or has been dropped.
15. Do not expose this apparatus to dripping or splashing and ensure that no objects filled with liquids, such as vases, are placed on the apparatus.
16. To completely disconnect this apparatus from the AC Mains, disconnect the power supply cord plug from the AC receptacle.
17. The mains plug of the power supply cord shall remain readily operable.
18. Do not expose batteries to excessive heat such as sunshine, fire or the like.



The lightning flash with arrowhead symbol within an equilateral triangle, is intended to alert the user to the presence of uninsulated "dangerous voltage" within the product's enclosure

that may be of sufficient magnitude to constitute a risk of electric shock to persons.



The exclamation point within an equilateral triangle is intended to alert the user to the presence of important operating and maintenance (servicing) instructions in the literature accompanying the product.

WARNING : To reduce the risk of fire or electric shock, do not expose this apparatus to rain or moisture.

SAFETY PROCEDURES

- Ensure that you connect your Subwoofer only to the type of power supply indicated on the amplifier faceplate, and ensure that the power cord cannot be walked on or otherwise damaged.
- To prevent electric shock, match wide blade of plug to wide slot, fully insert.
- Ensure that objects or liquids are not allowed to penetrate the enclosure.
- Your Bryston Subwoofers are finished in a durable vinyl and from time to time should be wiped clean gently with a slightly damp cloth to remove any dust or stains.

For any additional information or service, contact:

BRYSTON LTD.
677 Neal Drive
Peterborough, Ontario
Canada
K9J 6X7

Phone: 1-800-632-8217

QUICK-START SUBWOOFER SETUP

STEP 4

VOLUME: Set the volume to 1/2 turn of the rotation range. Later, during the set up process, you will likely return to this volume setting to balance the output of the subwoofer to the other speakers. Your receiver may be equipped with an auto-setup feature. These are very convenient but will not always give you the most optimum audio quality in your room. If you have the time we would suggest doing your set-up manually. You can always compare your manual setup to the auto-setup to see which one you prefer. After your initial set-up is complete, whether manual or auto, you may find you want to turn your subwoofer volume up or down

STEP 5

AC INPUT: Your subwoofer is supplied set to either 115 volts or 230 volts depending on the country we shipped it to. If you move countries, this voltage can be changed by having a technician change the fuse type (T6.3AL for 115V and T3.15AL for 230V) and move a cable inside your subwoofer amplifier to the plug marked with the desired voltage. Residents of some other countries will need to purchase an adaptor or new proper power cord that fits your specific socket.

Once you have made appropriate connections from the AV receiver or preamp/processor to the transmitter, find a nearby AC wall outlet and connect the main power cord to the three-wire socket at the bottom of the control panel. Move the power switch to the ON setting. The LED POWER indicator should glow Green. Leave the switch at the ON setting unless you go away for an extended period. Moving it to OFF will shut down all power to the subwoofer.

STEP 6

PHASE and POLARITY: This synchronizes the in/out movement of the subwoofer cone driver with the other speakers in your system. Once you have chosen the best location for your subwoofer, try rotating the phase dial in 1/8 turn increments starting at 0 until you reach 180 and then switch to Polarity to 180 and repeat the process to see if one of these settings produces deeper and smoother bass output in your room. Once complete, move the dial back to the position that resulted in the smoothest and deepest bass at several listening locations in the room. If you hear no difference, leave the dial and the polarity switch at the 0 position. Quite often the phase dial and polarity switch makes little difference, but it's dependent on your particular room's dimensions and subwoofer location.

STEP 7

SUBSONIC: Setting this switch to "ON" inserts a 20-Hz cut-off filter in the subwoofer's bass response to prevent the subwoofer from reproducing frequencies below 20 Hz, which may include rumble from studio air conditioning, subways or other undesirable artifacts. If you play vinyl discs from a turntable, set this switch to "ON" to prevent the subwoofer from reproducing turntable rumble and low-frequency record-warp anomalies.

Leave this switch set to "OFF" for all other digital recordings and DVD sound tracks that contain ultra-deep bass frequencies you want the subwoofer to accurately reproduce.

SPECIFICATIONS

Model wTS-12 Subwoofer		
RMS Amp Power :	500 Watts	Système :
Cross-over Adjust :	40 Hz, 60 Hz, 80 Hz, 100 Hz, 150 Hz	Réglage du filtre :
Phase :	Variable	Phase :
Woofer Size :	12"	Haut-parleur grave :
High Powered DSP Engine :	Yes	Circuit "DSP" de Grande Puissance:
Dynamic Power Supply :	Yes	Bloc d'alimentation dynamique :
Anechoic Resp. +/- 3dB :	18 Hz - 150 Hz	Réponse en milieu anéchoïque +/- 1.5 dB :
Max SPL Anechoic :	108 dB	Sensibilité anéchoïque maximale :
Dimensions HWD inches :	21.5" x 14.75" x 17"	Dimens. H W D (inches) :
Dimensions HWD mm :	550 x 375 x 430	Dimens. H W D (mm) :
Weight (lbs) each :	63 lbs	Poids (lbs) chacune :
Weight (kg) each :	29 kg	Poids (kg) chacune :

QUICK-START SUBWOOFER SETUP

Subwoofer Placement

The amount of deep bass you get from your new subwoofer will be quite dependent on proper location in your particular room, the room's dimensions, and the location of your listening area. You can't easily change your room or its dimensions, so it's worthwhile finding the best location that will let your subwoofer deliver its optimum performance—smooth, deep and powerful bass to your seating area.

The subwoofer does NOT have to be at the front of the room with your main stereo speakers. Deep bass below 80 Hz is not directional, so it doesn't matter if the subwoofer faces you or is at the side or back of the room. Now get ready to do the tried-and-true "subwoofer crawl."

Move your subwoofer as close as you can to where you sit. If it's a chair, move the chair aside and place the sub where the chair was. If it's a couch, slide the couch temporarily out of the way and put the sub about where you usually sit. Play a DVD movie with lots of low-frequency effects or a CD with plenty of deep bass in the music, the kind that really kicks your sub into motion.

Now crawl around the room in the general area where you were thinking of locating the sub or even in areas that you didn't think of. Go several yards in each direction—near the wall, out from the wall, towards a corner, away from the corner, and so on on all four walls—while you listen for smooth and extended bass response. At some locations, the bass may seem really exaggerated and boomy. In other spots, it may almost disappear.

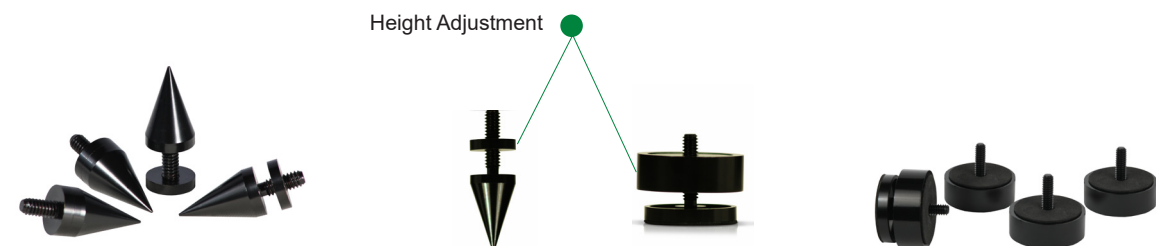
Pick a location somewhere between these extremes. That's it! Mark the spot with some masking tape then move the subwoofer into that position. Now put the furniture back.

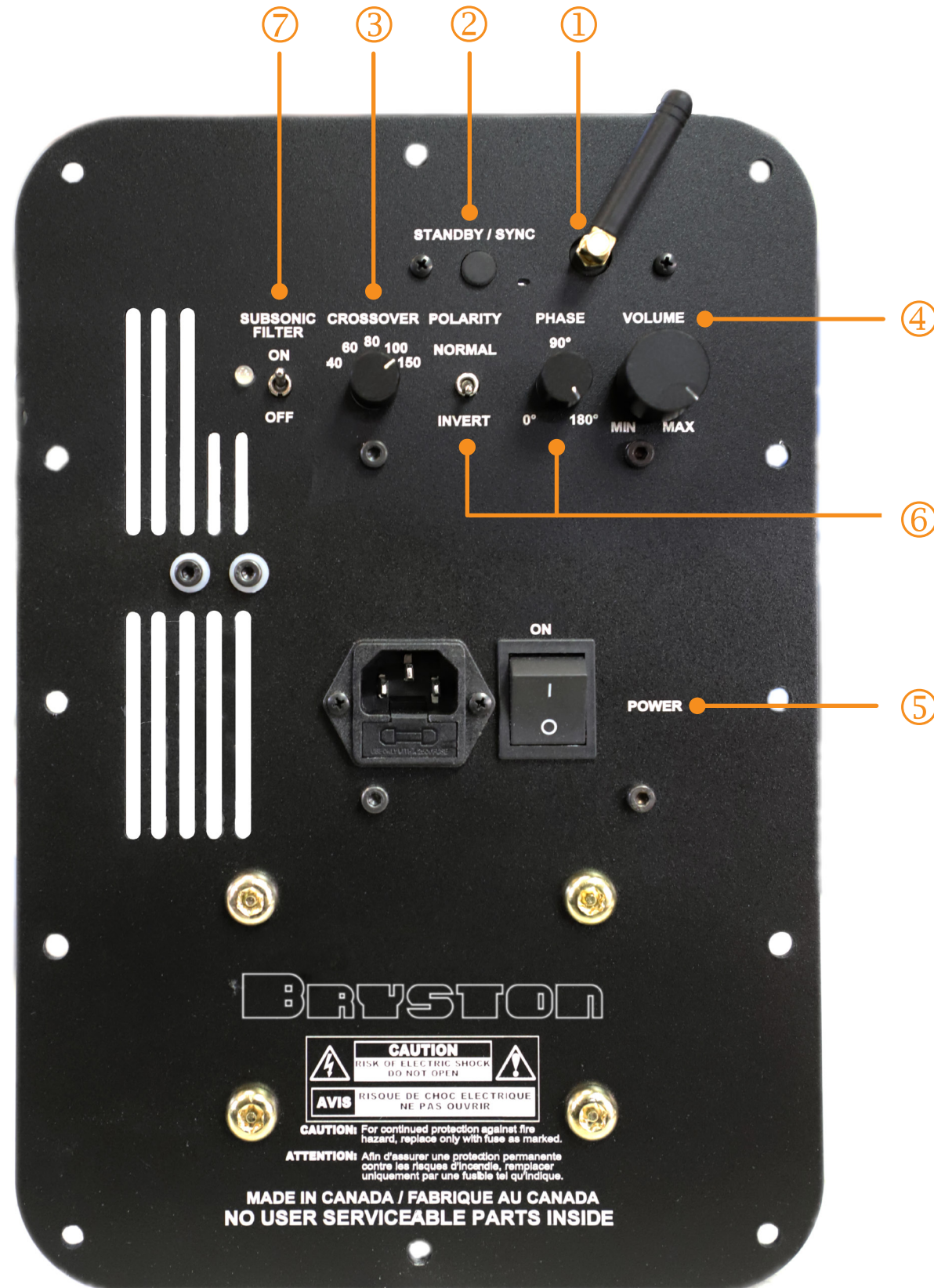
Test the technique by playing the same deep bass selections, only this time sit in your favorite chair (where the subwoofer was). The deep bass should sound just like it did at the place where the sub now sits. You see, it works!

Foot Installation

The Model wTS-12 Subwoofer comes pre-assembled with large non-marring feet. Optionally you may install the included spike feet by removing the large feet using the provided allen wrench. Install the spike feet and tighten securely in the inserts provided at the bottom of the speaker.

For speaker leveling, the height of both types of feet can be adjusted by turning the top portion of the foot up or down the thread. To adjust the height, loosen the foot from the bottom of the speaker and turn the top portion to the desired height. Retighten the foot securely. An allen wrench may be needed to secure the bottom of the round foot while adjusting the height.





STEP 1a

WIRELESS SETUP:

Standard Transmitter

Transmitter Connections:

Attach one of the included antennas to the back of the transmitter. Use caution to not over-tighten - finger tighten only.

Connect a standard line level source that has a volume control, such as the headphone jack of a smartphone or tablet, the left and right outputs from a pre-amplifier or receiver, etc. to the left and right inputs of the transmitter.

Plug the barrel connector of the supplied power adaptor into the DC input jack on the transmitter.

Plug the power adaptor into a nearby wall outlet.

Subwoofer Connections:

Place the subwoofer in your preferred location (See Placement section above).

Attach one of the included antennas to the back of the subwoofer.

Use caution to not over-tighten - finger tighten only.

Plug the power cable into a nearby wall outlet.

Powering On/Off Transmitter:

Press the white button marked Power/Sync on the back of the transmitter once to turn on. A green indicator light will turn on or flash (see below). Press the button again to turn the transmitter off.

Powering On/Off Subwoofer:

Move the main power switch to the On position. Press the button marked Standby/Sync on the back of the subwoofer once to turn on. A green indicator light will turn on or flash (see below). Press the button again to place the subwoofer in standby mode and move the power switch to the off position, if desired. Note that each speaker will automatically switch to a low power mode approximately 30 seconds after playback stops.

STEP 1b

BryFi Transmitter

Transmitter Connections:

Attach one of the included antennas to the back of the transmitter. Use caution to not over-tighten - finger tighten only.

If desired, connect a standard line level source such as the headphone jack of a smartphone or tablet, CD/DVD player, etc. to the Left and Right analog inputs of the transmitter.

If desired, connect a digital optical source such as a TV to the optical input of the transmitter. Set the optical output on your TV to Stereo.

Plug the barrel connector of the supplied power adaptor into the DC Input jack on the transmitter.

Plug the power adaptor into a nearby wall outlet.

Subwoofer Connections:

Place the subwoofer in your preferred location (See Placement section above). Attach one of the included antennas to the back of the subwoofer (continued on next page).

STEP 1b cont.

Use caution to not over-tighten - finger tighten only. Plug the power cable into a nearby wall outlet.

Powering On/Off Transmitter:

Press the white button marked Power on the front of the transmitter once to turn on. A green indicator light will turn on and the system will perform a start-up sequence that will take approximately 30 seconds. A start-up sound will play when the system is ready. Press the button again to turn the system off.

Powering On/Off Subwoofer:

Move the main power switch to the On position. Press the button marked Standby/Sync on the back of the subwoofer once to turn on. A green indicator light will turn on or flash (see below). Press the button again to place the subwoofer in standby mode and move the power switch to the off position, if desired. Note that each speaker will automatically switch to a low power mode approximately 30 seconds after playback stops.

STEP 2

SYNCING:

In order for your subwoofer to receive a signal from the wireless transmitter, they need to be synced/paired. This process only needs to be performed once as all the components will remember each other, even after disconnecting the power.

On the transmitter:

Press and hold the Power/Sync or Sync button until the green light starts flashing rapidly.

On the subwoofer: Press and hold the Standby/Sync button until the green light is solid. Note that the green indicator light on the transmitter will also now be solid.

Your wireless subwoofer is now ready to use!

Recommendations:

The most reliable wireless signal quality will be achieved by placing the transmitter and subwoofer within "sight" of one another. If you notice interruptions in the audio signal, try moving the transmitter to another location.

STEP 3

CROSSOVER: If you are using the Bass Management crossover menu settings in your A/V receiver or pre-amp processor turn the subwoofer crossover control to 150 Hz. Since every room and subwoofer location in it will react differently, we suggest you try some other crossover settings as well, for example 40 Hz with a pair of Bryston A1s. You may find that the best sound in your room is achieved using a slightly higher or slightly lower crossover setting to our suggestion above.